

NOTICE

The purchaser agrees when purchasing this plan (the "Plan"); the purchaser has acquired the right to build or construct the project or project set out in the Plan for personal use only and not for any commercial use. 2) reproduction of the Plan in whole or in part by any means whatsoever is strictly prohibited. The Handyman should not be liable for any willful misuse or negligent use of this plan, the Project or any tools used to construct the Project or for any loss or damage resulting therefrom.

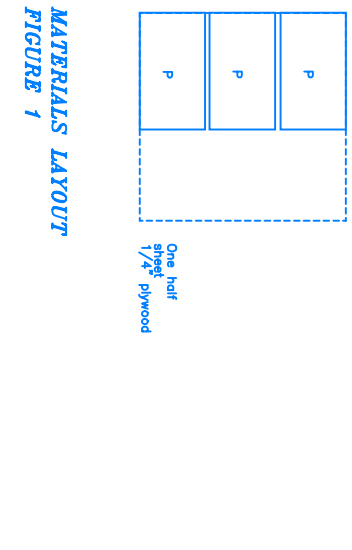
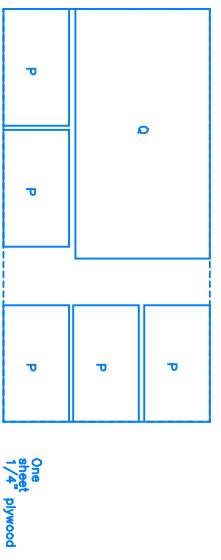
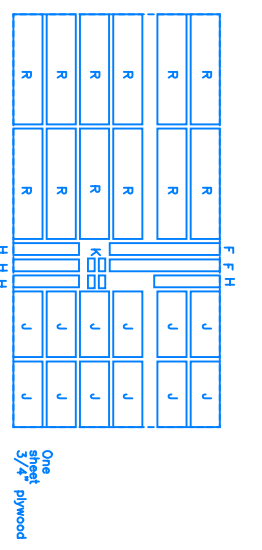
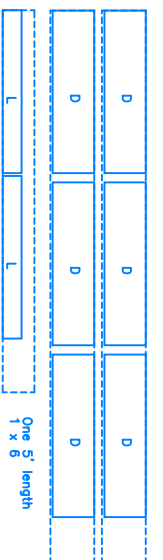
Note: Read all directions before beginning

- Carpenter's Glue should be used to Reinforce all joints
- Set all nails and countersink all screws
- Dimensions in brackets denote millimeters

Directions

1) Lay out your material on the workbench as outlined in the suggested material layout. Draw out all parts exactly as illustrated in cutting diagram (Fig 2), including the letter designations. In pencil. Ensure to leave a small space between cut lines to allow for the width of the saw. Before cutting, double check all measurements to ensure they are correct. Always cut on the waste side of the line. Cut the bottom edges of D and L at 30 degrees as shown (Fig 3). 1/8" from the edge, to make the finger grip. You can use a router or table saw set at an angle. You can cut the rabbet joints in pieces B (Fig 4) with either a table saw with the blade set to a 1/2" depth, or with a router. When cutting across the grain tape the edges with masking tape or clamp on 1/8" material to avoid splintering.

OTHER



MATERIALS LAYOUT

FIGURE 1

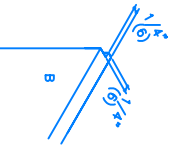


FIGURE 4

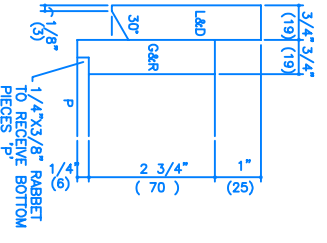
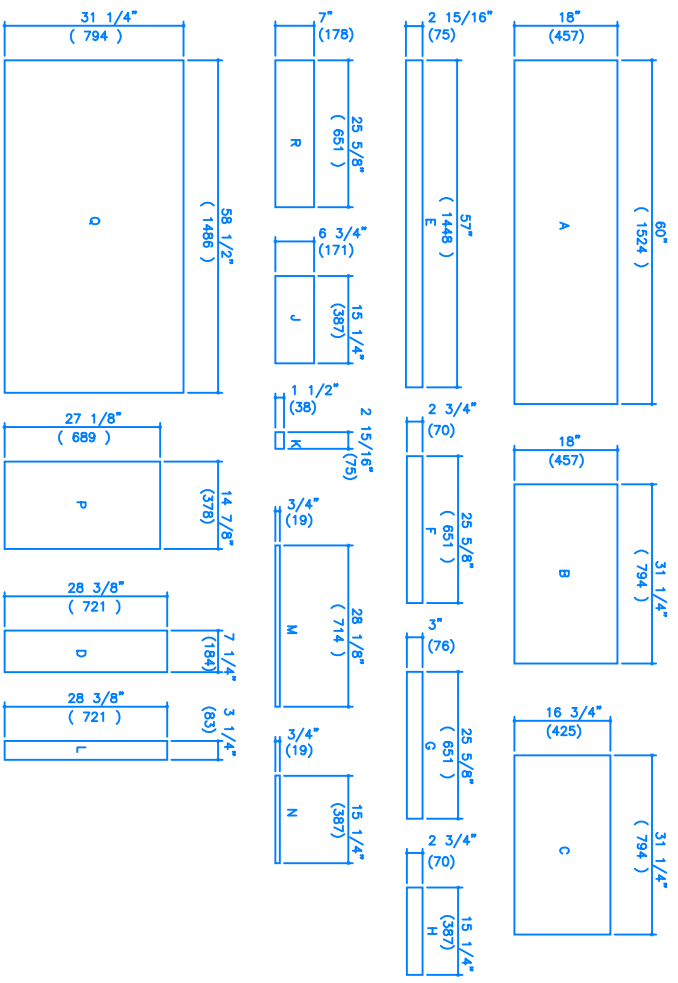


FIGURE 3



CUTTING DIAGRAM

FIGURE 2

MATERIALS LIST*

- Two 8' 1x8 (3/4"x7 1/4")
- One 5' 1x6 (3/4"x5 1/2")
- Two 4'x8' sheets 3/4" plywood, good both sides
- One end or half 4'x8' sheets 1/4" plywood, good both sides
- Approx. 1/2 lb. 1 1/4" finishing nails
- Approx. 1/2 lb. 3/4" finishing nails
- Approx. one hundred 1 1/4" #8 fitcheed screws

MATERIALS LIST*

- 24' edgetaper
- Sandpaper
- 24' edgetaper glue
- Carpenter's glue
- Stain and varnish, or oil
- Eight sets 1/2" side mount drawer guides and hardware (1/2")

TOOLS

- Pencil & measuring tape
- Hand saw
- Router (optional)
- Table saw
- 1/16", 1/8" and 3/8" drill bits
- Screwdriver, Square, Nail Set